

Easycon Installation

Installation Procedures:

- **First Time Installation**
- **Already Installed**

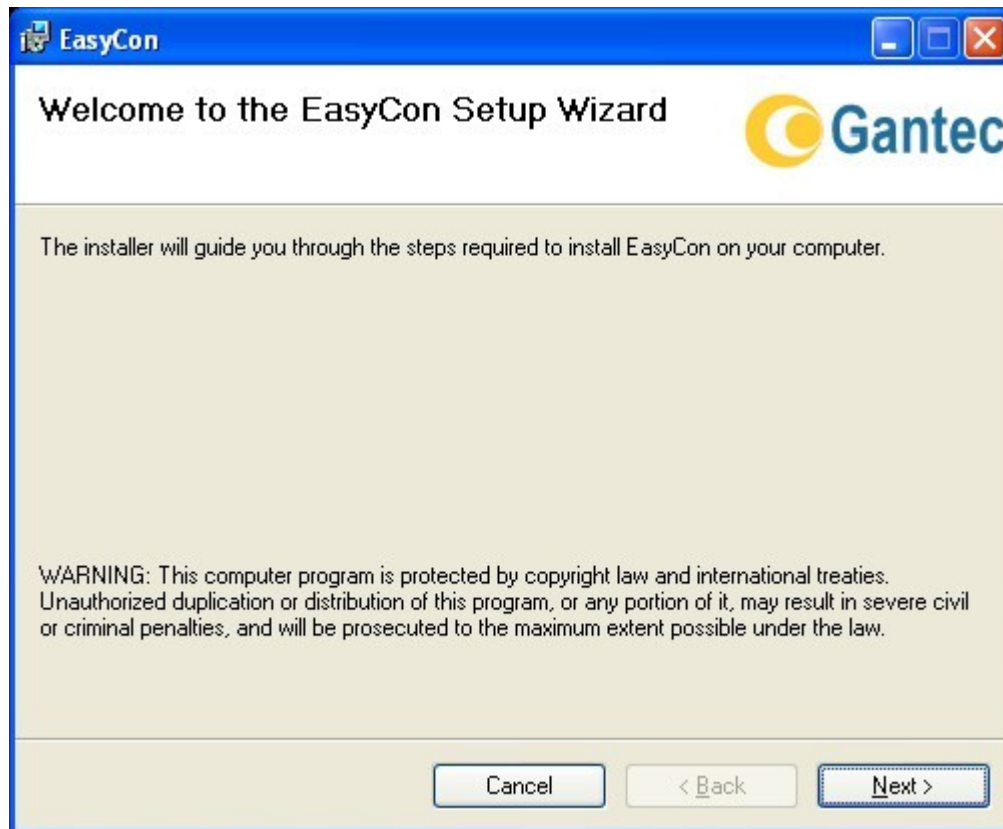
First Time Installation:

- o Insert CD.
- o The following screen will display.
- o Click "Install" button in the Screen (3rd Row).



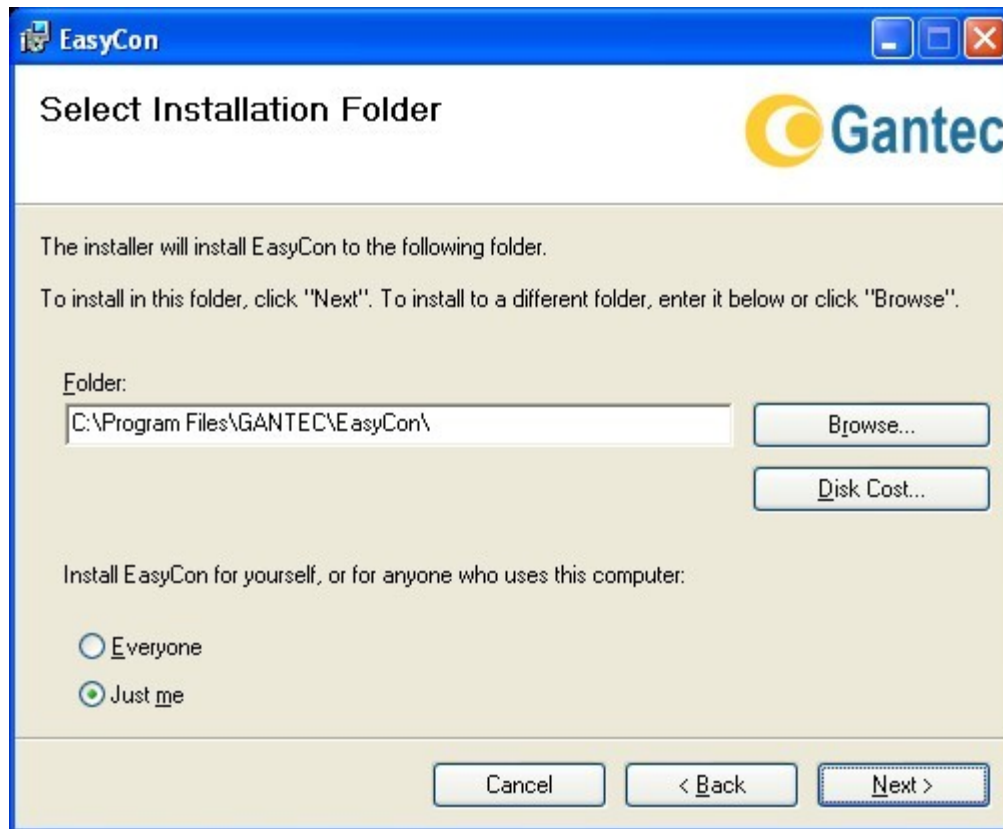
Screen 1

- o The Following screen will display



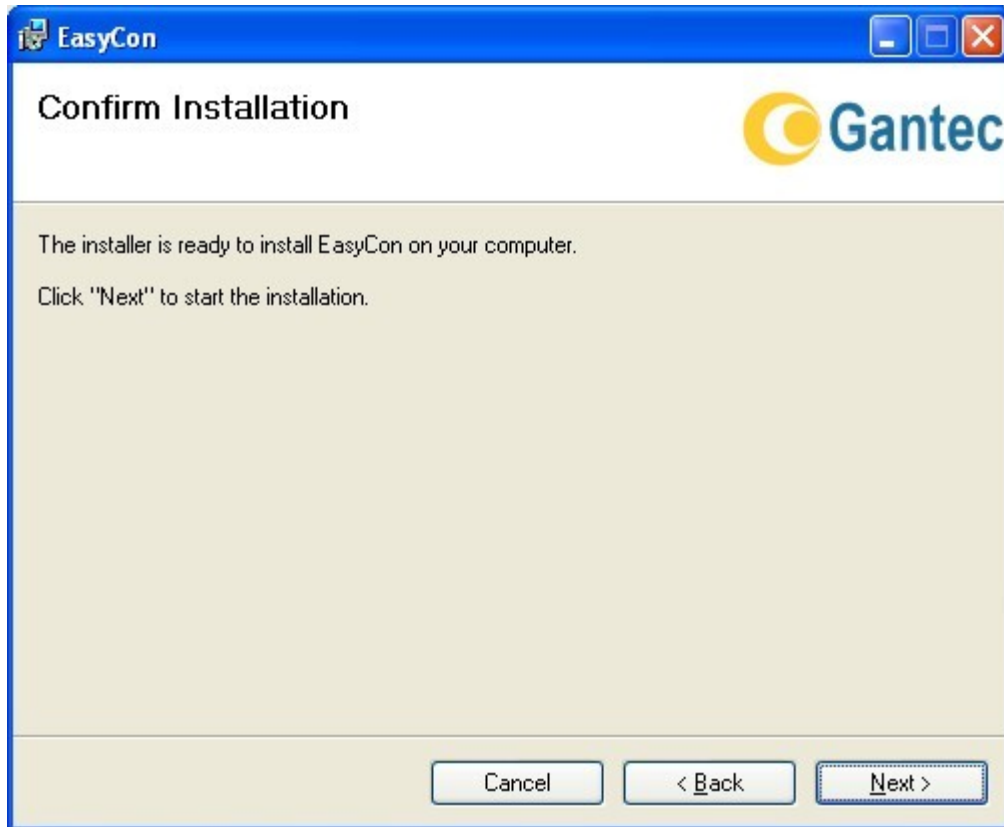
Screen 2

- o Click "**Next**" button in the Screen.
- o The following screen will display.



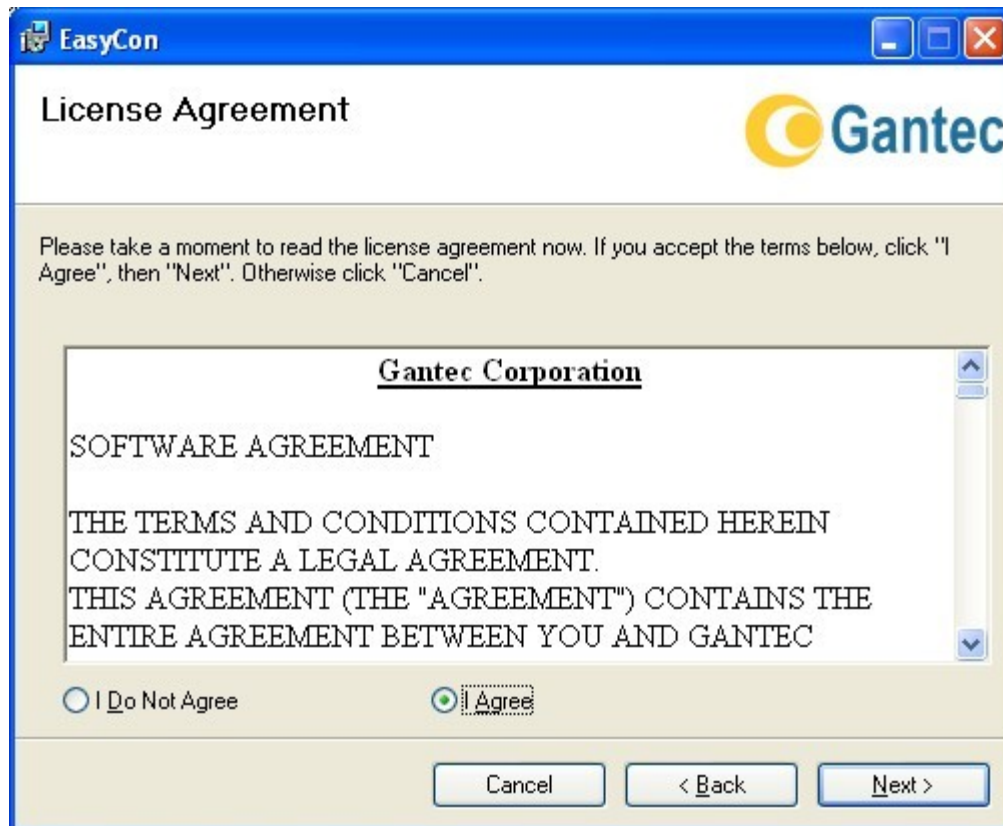
Screen 3

- o Click "**Next**" button in the Screen.
- o The following screen will display.



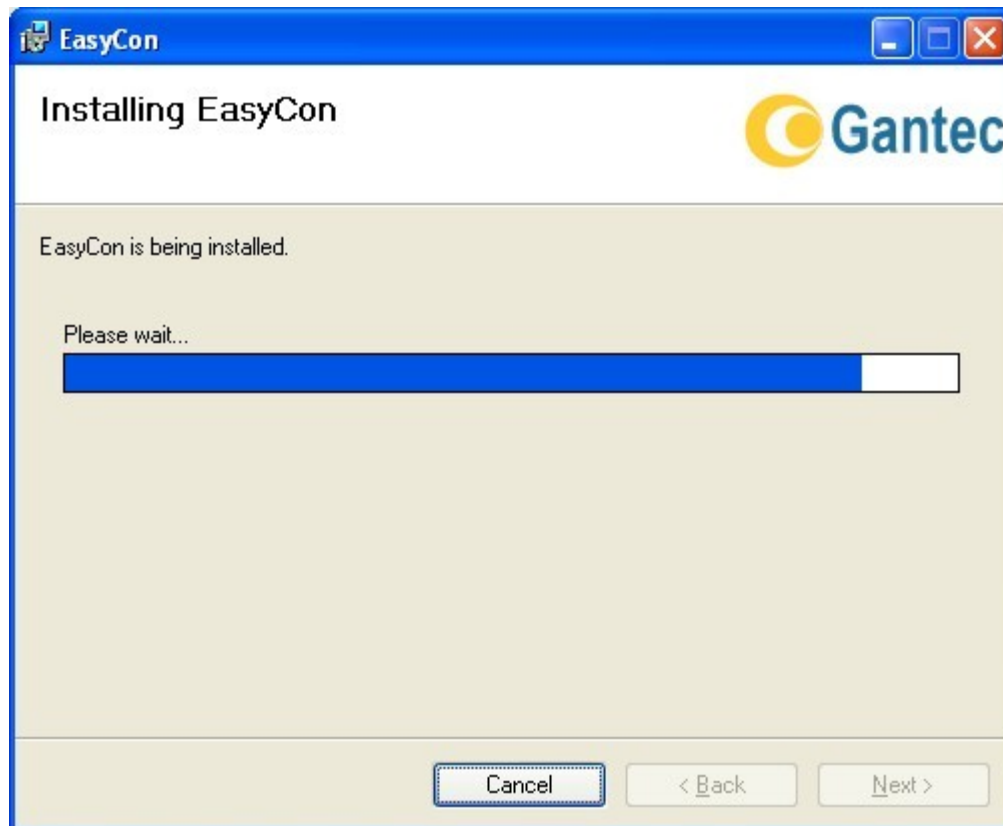
Screen 4

- o Click “**Next**” button in the Screen.
- o The following screen will display.

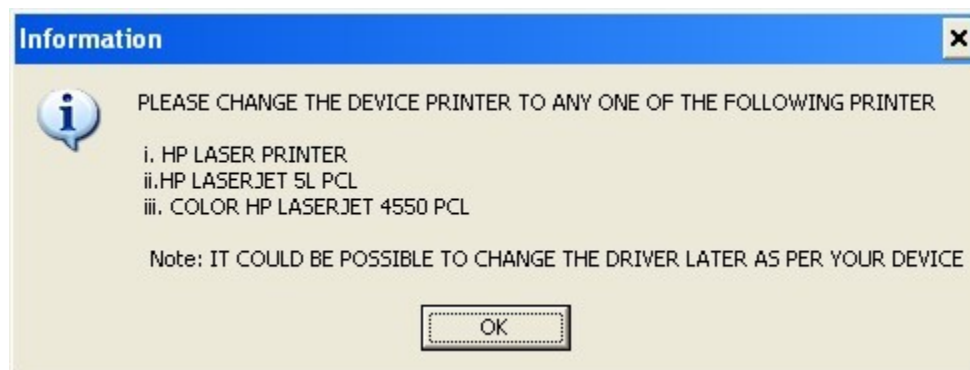


Screen 5

- o Select "**I Agree**" Option in the Screen.
- o The following Screen will display.

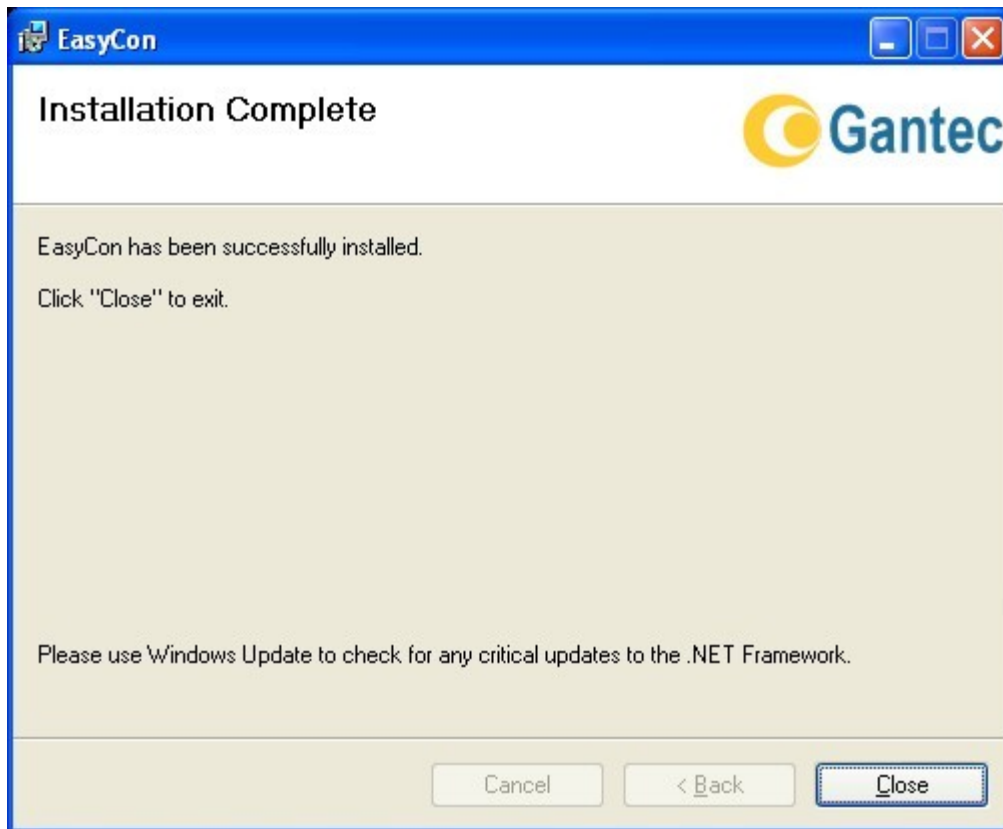


Screen 6



Screen 7

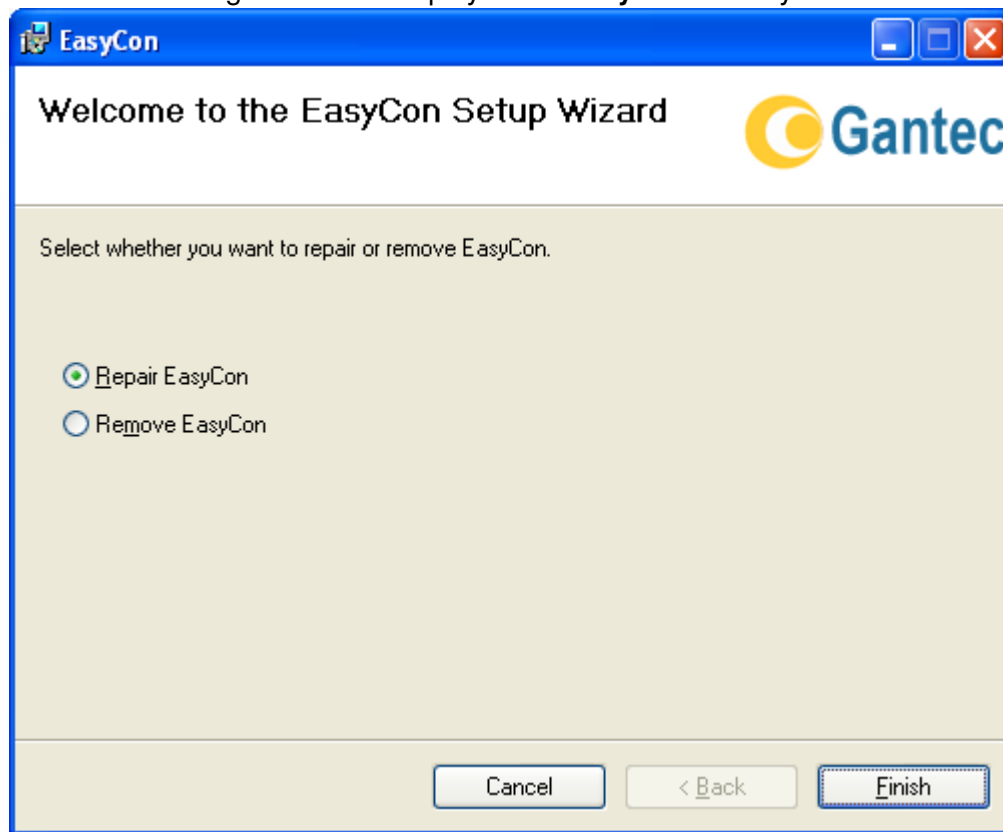
- o Click "OK" button.



Screen 8

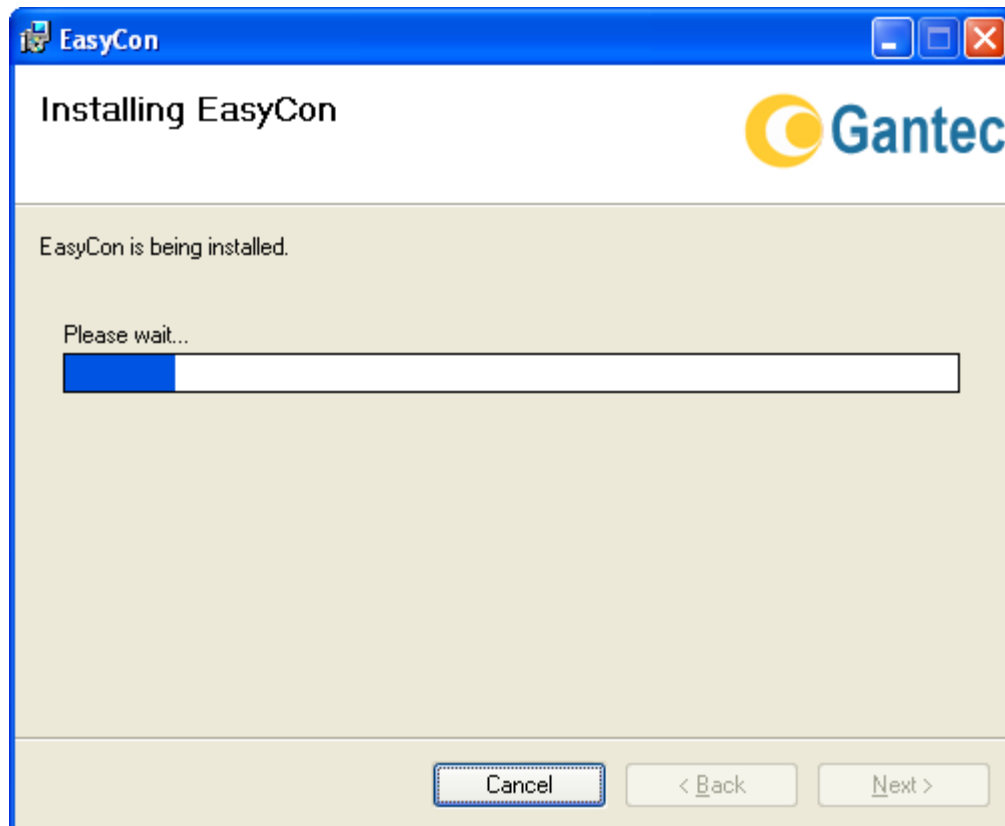
- **Already Installed**

The following screen will display when **EasyCon** already installed.

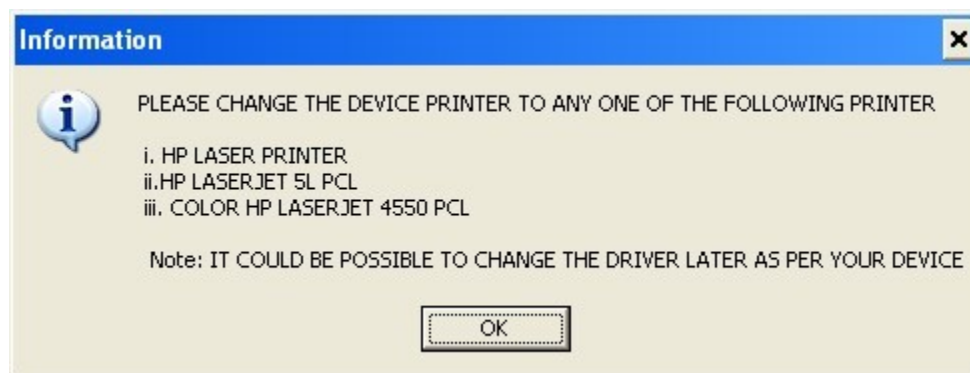


Screen 9

- o Click "**Finished**" button.
- o The following screen will display

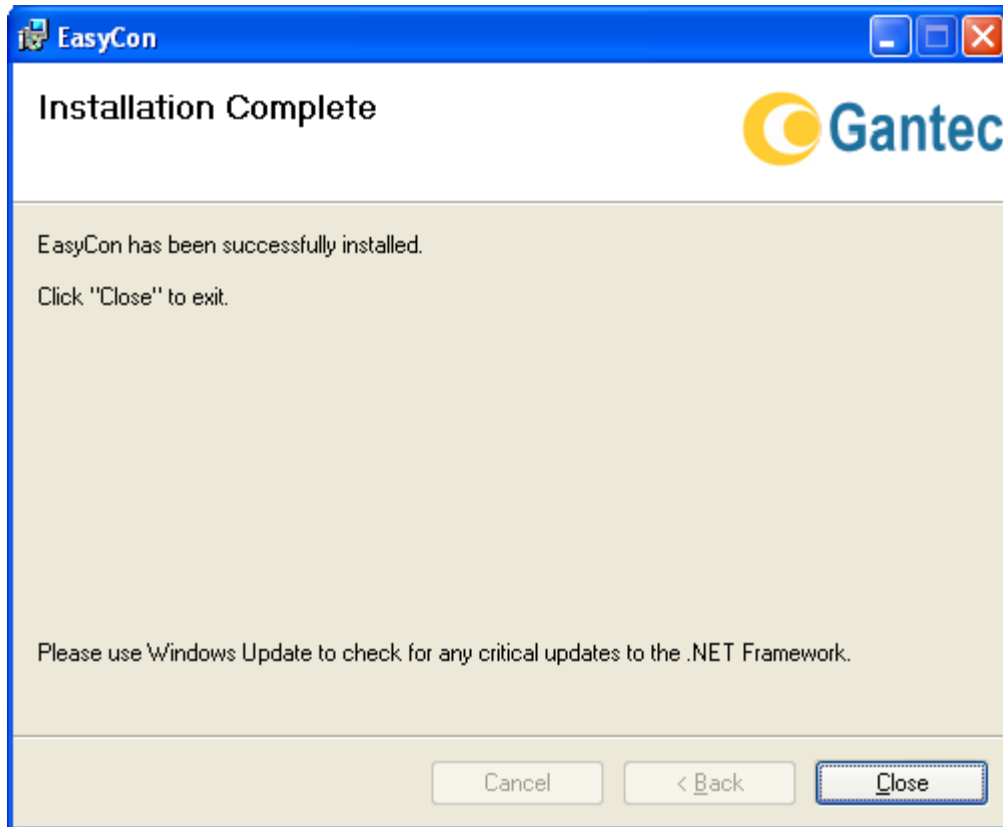


Screen 10



Screen 11

- o Click "OK" button.



Screen 12