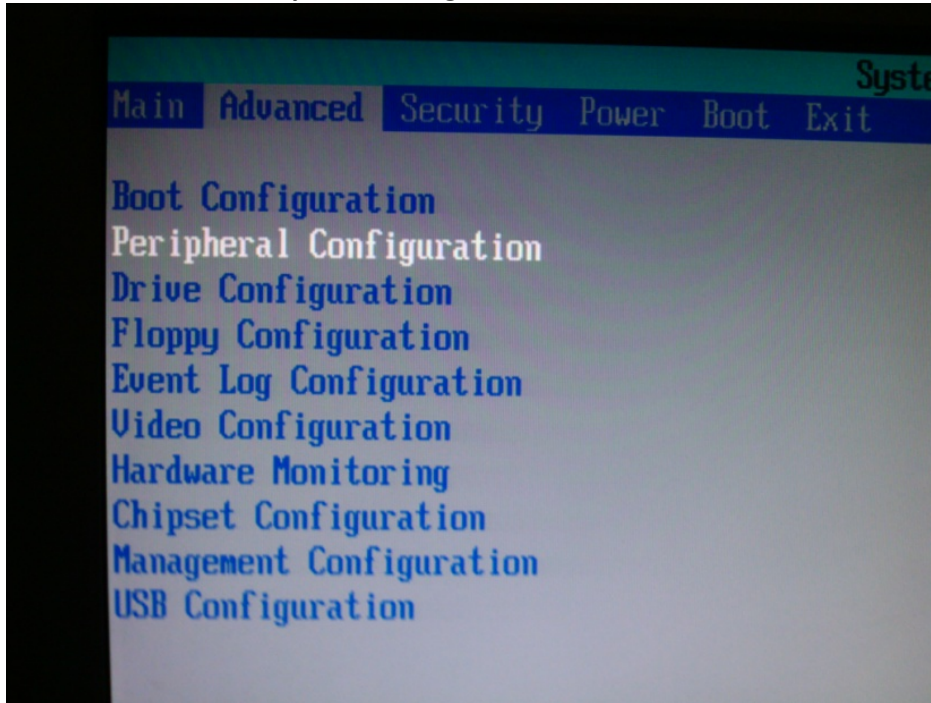


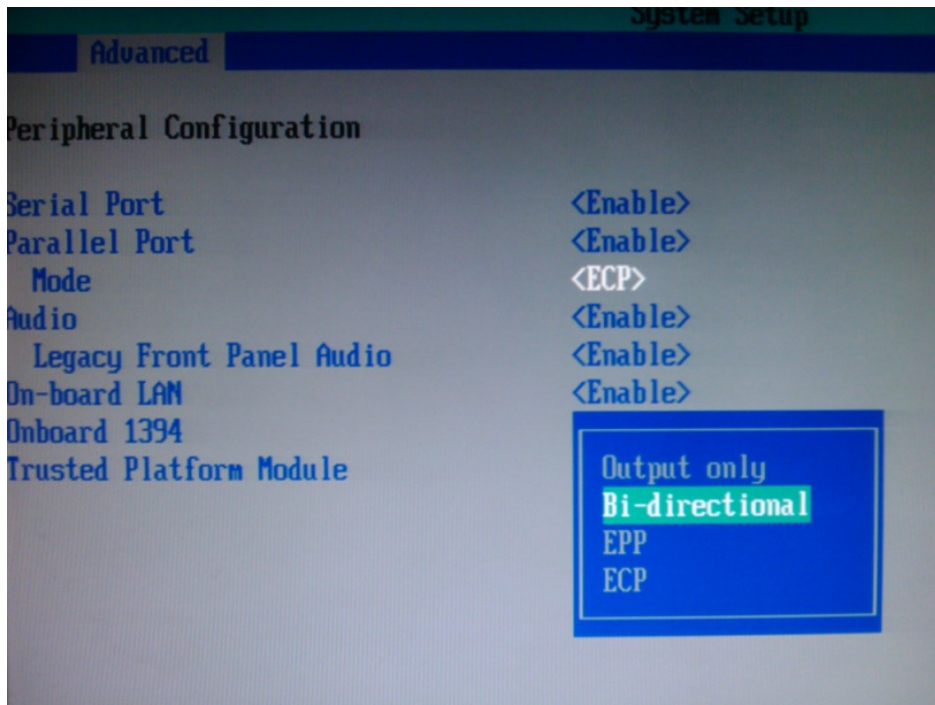
**Step by Step Instructions for Changing BIOS
Settings to activate Print2USB Box**

Print2USB box was designed for standard or SPP, uni-directional implementation. Due to this reason the box cannot communicate with Centronics, Enhanced Parallel Port (EPP) or Extended Capability Port (ECP) mode.

To change the mode, please use BIOS Settings while system is booting and go to “**Advanced**” in advanced menu choose “**Peripheral Configuration**”



Change the “**Parallel Port Mode**” from <ECP> or <EPP> to <Bi-Directional> or <Normal>



After the changes go to “Exit” menu and choose “Exit Saving Changes” and press “Y” to close the BIOS.

