

**Step by Step HP Printer Installation Guide
for Accutome A-Scan Plus Device**

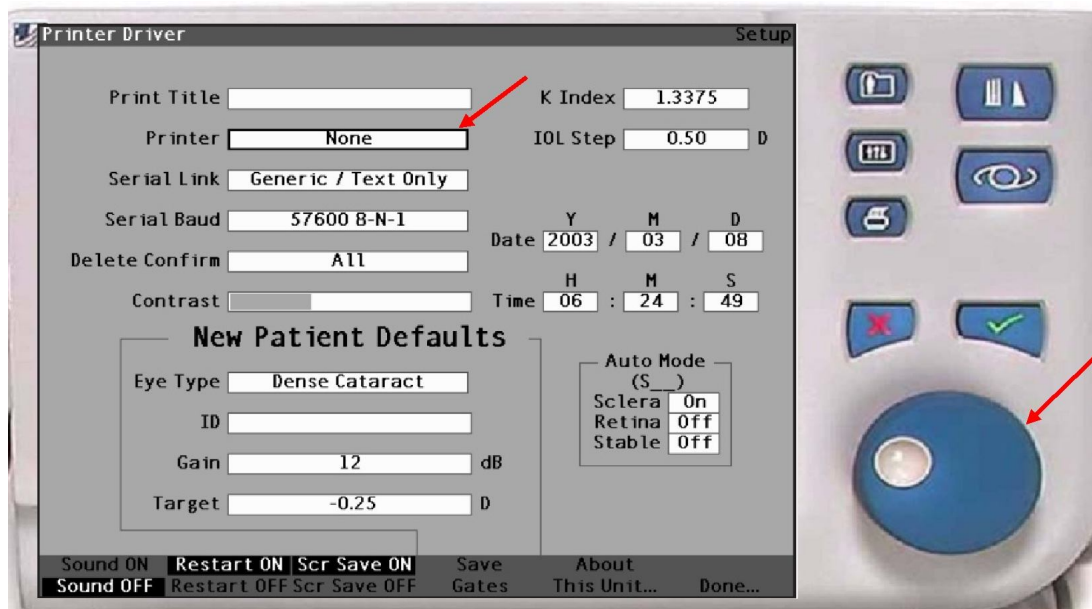
HP installation for Accutome A-Scan Plus

Connect the Centronics printer cable at the rear side of A-Scan PLUS device. Plug the other end of the cable to the Print2USB box.

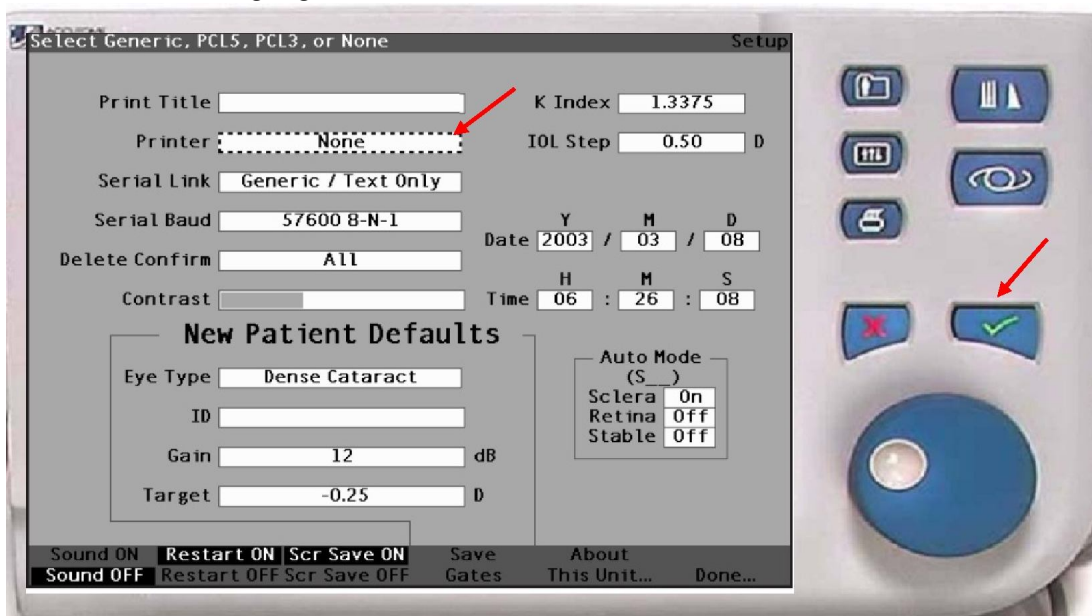
IMPORTANT: Standard centronics cable will not suit the outlet of the medical device. Please use the correct adapter to connect the centronics cable.



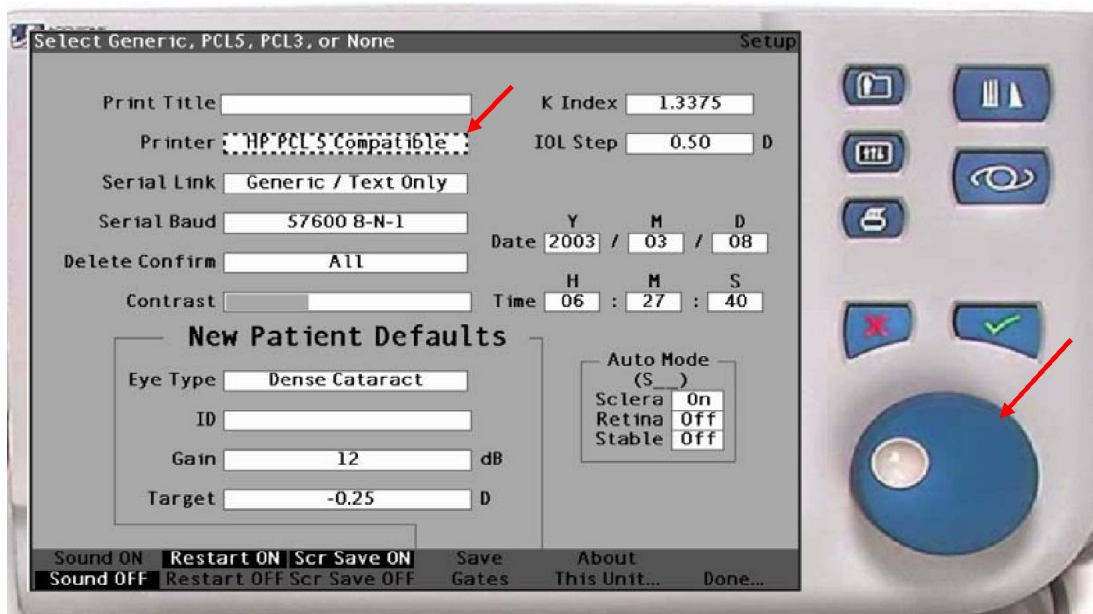
In the Setup screen, please turn the blue wheel until the “Printer” field is highlighted.



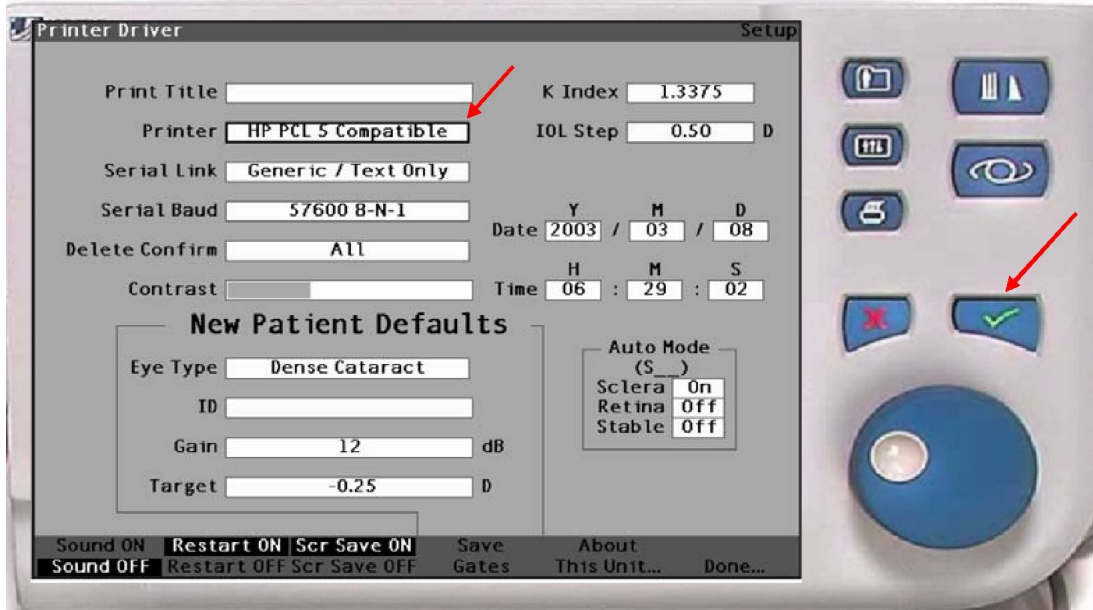
To activate the printer data field, please press the blue wheel or use the “√” button. Dashed border is highlighted.



In the “Printer” data field, please turn the blue wheel until you see “HP PCL 5 Compatible” in the screen.



Press the blue wheel or use the “√” button. This will save your settings and deactivate the printer section.



The medical device is ready to use for the data transfer. You can take the measurement of the eye; if the Print2USB box is connected both the LED's (GREEN & ORANGE) will glow.

Press “PRINT” button on board of the instrument for Electronic reports.

